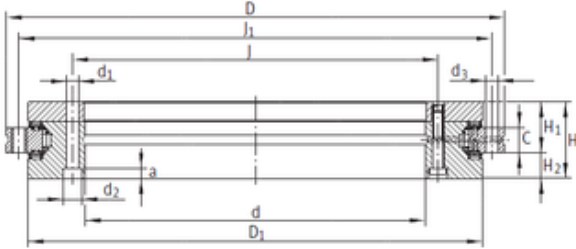




# NTN BEARING CORP.OF AMERICA

## INA YRTS260 complex bearings



Bearing No. YRTS260

Size	260x385x18 mm
Bore Diameter	260 mm
Outer Diameter	385 mm
Width	18 mm
d	260 mm
D	385 mm
C	18 mm
H	55 mm
a	8,2 mm
d1	9,3 mm
d2	15 mm
d3	9,3 mm
D1	345 mm
H1	36,5 mm
H2	18,5 mm
J	280 mm
J1	365 mm
Weight	18,3 Kg
Dynamic load rating radial (C)	110 kN
Dynamic load rating axial (C)	173 kN
Static load rating radial (C0)	305 kN
Static load rating axial (C0)	1050 kN

YRTS260 Bearing 2D drawings and 3D CAD models